



The City Newsletter

**IGA**



Population of Iga City 89,897

Foreign Nationals 5,548

6.17% of Population

End of October, 2020

Also available online at <http://www.mie-iifa.jp/> ☆この情報紙は「広報いが」などから記事を選んで載せています  
Articles published in this newsletter are taken from the monthly "Kouhou Iga" and other publications.

# Happy Holidays & Season's Greetings

## Information お知らせ

### Request for Coronavirus Prevention Measures during Seasonal Events

季節の行事などにおける新型コロナウイルス感染防止対策<三重県からのお願い>

During the holidays at the end and beginning of the year, many events will be held where there will be many people. Mie province calls on everyone to observe the measures to prevent the spread of coronavirus.

1. Wear masks, wash your hands well, keep an appropriate distance from other people, avoid places with a lot of people and observe the basic measures to prevent the new coronavirus.
2. Avoid participating in events that have not taken basic measures to prevent the coronavirus. Mainly, parties and events where an undetermined number of people will be very close and will have many close conversations.
3. If you are going to attend events, wear masks, wash your hands well, keep an appropriate distance from other people, avoid loud conversations and take appropriate preventive measures.
4. Avoid spending too much time with many people on the streets, restaurants and other places, and also refrain from drinking alcohol at night and at seasonal events.
5. Spend more time indoors with your family. There are several new ways to entertain yourself as you participate in online events.
6. Use coronavirus prevention applications.

"Anshin Mieru LINE(安心みえるLINE)" only in Japanese  
"COCOA"-Coronavirus Contact Confirmation Application  
in various languages



<<https://mieinfo.com/en>>



### Business Hours during Holidays 年末年始のお知らせ

#### City Hall and Public Offices 市役所など

Closed from December 29, Tue. to January 3, Sun.  
(Births, deaths and marriages can still be registered)

#### Consular Holidays 領事館

Most consulates will close for several days over the holidays. Check with your own consulate for details.

#### Dental Clinics 歯医者

Treatment hours: 9am to 5pm  
-Dec 30, Wed Tomishima Dental Clinic  
[Ao 215-2] Tel:0595-52-0129  
-Dec 31, Thu Nakagawa Dental Clinic  
[UenoKodama-cho3068]  
Tel:0595-21-0334  
-Jan 2, Sat Hattori Dental Clinic  
[Sanagucho 640] Tel:0595-23-3130  
-Jan 3, Sun Bamba Dental Clinic  
[Shindo 1276-1] Tel:0595-45-1008

No dental clinics are open January 1st. If you need to see a dentist on the 1st, contact the Information Center on tel:059-229-1199

#### Medical Emergencies 応急診療所

In case of an emergency you should first contact your regular doctor. If he or she is not available, go to the Iga Medical Emergencies Room (Iga shi Oukyuu Shinryou Sho), behind Okanami Byouin, tel 0595-22-9990.

-Dec 29, Tue and Jan 4, Mon 8pm -11pm  
-Dec 30, Wed to Jan 3, Sun 9am -noon, 2pm -5pm,  
8pm -11pm

-Acceptance is until 30 minutes before the medical examination end time.

-Reception is at the car parking to avoid crowding of patients.

#### Hospital A&E Rooms 二次救急病院

Treatment hours: 8:45am to 8:45am the following morning.  
(Okanami Hospital: 9am to 8:45am the following morning)

-Dec 29, Tue Ueno Sogo Shimin Hospital  
-Dec 30, Wed Okanami Sogo Hospital  
-Dec 31, Thu Nabari Shiritsu Hospital  
-Jan 1, Fri Ueno Sogo Shimin Hospital  
-Jan 2-3, Sat-Sun Nabari Shiritsu Hospital  
-Jan 4, Mon Okanami Sogo Hospital

Please refer page 3 for more details of each hospital.

Monthly Tax Payments  
今月の納税

Pay by December 25, Friday

Fixed Assets 3<sup>rd</sup> [Kotei Shisan Zei] / National Health Insurance 6<sup>th</sup> [Kokumin Kenkou Hoken]  
[Inquiries] Shuu Zei Ka Tel 0595-22-9612

# Information お知らせ

## Has your child got all their vaccinations? 乳幼児の定期予防接種を受けましょう

You should make sure that your child receives his or her vaccinations as scheduled. If you can't remember if he or she has received them all, you can check in your parent child notebook (boshi techo). Please be aware that if your child is no longer in the eligible age range to receive the vaccinations for free, you will have to bear the cost.

Vaccinations		Doses	Eligible Age
Rota	Rotarix	2~3	6 ~ 24 wks
	Rota Teq		6 ~ 32 wks
			*Recommended the first dose will be given by 14 wks and 6 days after birth.
Hibbs		1~4	2 mnths ~ under 5 yrs of age
Streptococcus Pneumoniae		1~4	
Hepatitis B		3	Under 12 mnths
Combined Shot (Diphtheria , Whooping Cough , Tetanus and Polio)		4	3 mnths ~ under 7.5 yrs of age
BCG		1	Under 12 mnths of age
Measles Rubella(MR)	First Stage	1	1~ under 2 yrs of age
	Second Stage	1	Born between April 2, 2014 and April 1, 2015
Varicella		2	1~ under 3 yrs of age
Japanese Encephalitis	First Stage	3	3 ~ under 7.5 yrs of age
	Second Stage	1	9 ~ under 13 yrs of age
Combined Shot (DT)		1	11~ under 13 yrs of age
Cervical cancer		3	12 ~ 16 yrs or its equivalent females *Not actively recommended, but those who wish can be vaccinated with your understanding of its effectiveness and risks.



[Inquiries] Kenko Suishin Ka Tel 0595-22-9653

## Subsidy for the Elderly Pneumococcus Vaccination 高齢者肺炎球菌の予防接種を助成します

[Deadline] March 31, 2021

[Eligibility] Who has never vaccinated in the past and applies (1) or (2)

- (1) Who becomes 65 this fiscal year (born between April 2, 1955 and April 1, 1956)
- (2) Who is between 60 and 65 and has a physical disability certificate first grade caused heart, kidney or respiratory dysfunction or immune dysfunction due to human immunodeficiency virus

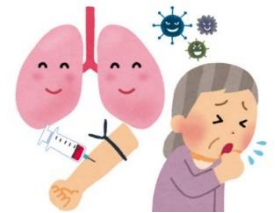
\*If you are eligible, you will receive the notification.

[Dose] Once

[Fee] 3,000yen

\*Person who becomes 70, 75, 80, 85, 90, 95 and 100 this fiscal year and has never vaccinated in the past can receive a partial subsidy for vaccination cost. For more details, please contact the following.

[Inquiries] Kenko Suishin-Ka Tel: 0595-22-9653



## Make ready for winter 冬支度をしましょう

### ■ Prepare the water pipes for the winter

It is said that the water pipes will freeze up when the temperature falls down below minus 4 degrees. During this period from December to February, the water pipes freezing up and damage accidents occur frequently in various places. Please prepare the water pipes to avoid such accidents.

Cover the outside water pipes or faucets with the heat insulation materials, old blankets or clothe and lap with plastic tape.

If the water pipe freeze up and water does not come out, warm the pipe with tepid water.

If you suddenly apply hot water, the pipe bursts.

When the water pipe or faucet breaks, please stop the stopcock and contact at the city designated water service construction store to fix it.

[Inquiries]

Re: the water leakage and water supply construction: Suido Komu ka section: Tel 0595-24-0002

Re: Opening / closing stopper, meter reading, fee: Water Supply Customer Center: Tel 0595-24-0013



### ■ Prepare your car for the winter

Driving your car without any anti-slip measures on the snow-covered or frozen road is against the legislation. It will pose a risk of an accident and become a cause of stacking up. When it has a heavy snow, the snow melting agent will be distributed on major roads, but still it would be dangerous without any anti-slip measures. Please keep driving in reliable and safe with the snow chain or snow tires.

[Inquiries] Iga Kensetsu Jimusho Hozenshitsu Tel:0595-24-8210

Iga Police Department Tel:0595-21-0110



## Infant Health Checkups and Consultation

赤ちゃんの検診と相談

In Iga, checkup examinations are available at 18 months and 3 years. Notifications will be sent out to homes with children eligible for the checkups. The examinations are; measuring weight and height, medical and dental checkup, and advice on nutrition and childcare. Please bring your "Mother-Child passbook (*Boshi techo*)" with you.

18 months	December 15, January 12	1:15pm to 2:40pm	Haitopia Iga 4F
3 years (3 and half years)	December 3, December 24, January 14	1:15pm to 2:40pm	Haitopia Iga 4F



### ◆Mie Child Medical Hotline (*Mie Kodomo Iryou Dial*) / TEL: #8000 (059-232-9955)

When you have a question related to child illness, growth, vaccinations and more, please feel free to ask a pediatric doctor at the toll free hotline every day from 7:30pm to 8am in the following day.

【Eligibility】 Children less than 18 years old and their family members

【Inquiries】 Kenkou Suishin-Ka Tel:0595-22-9653

## Medical Emergencies & Assistance

救急医療

When you need medical treatments, see your family doctor during your clinic's opening hours. If you fall sick when the clinic is closed, refer the following options. Make an appointment before your visit and bring your health insurance certificate.

### ◆Iga-shi Emergency Clinic / TEL: 0595-22-9990

【Clinical Department】 Internal Medicine and pediatrics

【Address】 Iga-shi Ueno Kuwamachi1615 (Behind Okanami Hospital)

【Time】 Mon to Sat: 8pm-11pm

Sun and Public Holidays: 9am- noon, 2pm- 5pm and 8pm- 11pm



### ◆The Mie Medical Information Center

(Mie ken Kyuukyuu Iryou Jouhou Center)

TEL: 059-229-1199

This center can give you information about which hospitals are available in your area.

### ◆Three medical emergency facilities on duty

◇Iga Shimin Hospital / TEL: 0595-24-1111

◇Nabari Hospital / TEL: 0595-61-1100

Mon to Fri: 5pm- 8:45am

Sat, Sun and Holidays: 8:45am- 8:45am

◇Okanami Hospital / TEL: 0595-21-3135

Mon: 5pm- 9am

Wed: 5pm- 8:45am

Sun: 9am- 8:45am

\*The closing time is the time of its following day.

December						
Sun	Mon	Tues	Wed	Thurs	Fri	Sat
		1 Nabari	2 Okanami	3 Nabari	4 Ueno	5 Nabari
6 Nabari	7 Okanami	8 Ueno	9 Okanami	10 Nabari	11 Ueno	12 Ueno
13 Okanami	14 Okanami	15 Nabari	16 Okanami	17 Nabari	18 Ueno	19 Nabari
20 Nabari	21 Okanami	22 Ueno	23 Okanami	24 Nabari	25 Ueno	26 Ueno
27 Okanami	28 Okanami	29 Ueno	30 Okanami	31 Nabari	Except pediatrics	

### ◆24 Hours Iga-shi Emergency Call / TEL: 0120-4199-22 (24 Iga-shi Kyuukyuu Kenkou Soudan Dial)

This is a toll free consultation about health and medical issue 24/7. You can ask anything about physical and mental health, medical issue, child care, nursing service and so on anytime.

【Inquiries】 Iryou Fukushi Seisaku-Ka Tel:0595-22-9705

## Advice & Consulting 相談窓口

You can get advice relating to work problems, schools, health, insurance, retirement & pensions, child-rearing, housing, taxes, visas, or any other problems related to your day to day life. This service is free. If you have any problems or difficulties, don't leave them until later. Come to city hall or Tabunka Kyousei Center for reliable, professional advice.

### ■Shimin Seikatsu-ka, City Hall 2F

【Open】 Mon-Fri, 8:30-17:00

【Tel】 0595-22-9702

【Venue】 3184 Shijuku cho, Iga-shi



### ■Iga-shi Tabunka Kyousei Center

【Open】 Mon-Fri, and Sun(2<sup>nd</sup> & 4<sup>th</sup>) 9:00-17:00

【Tel】 0595-22-9629

【Venue】 2955 Ueno Higashi-machi, Iga-shi

【URL】 <http://iga-tabunkakyouseicenter.com>



We have a monthly private consultation with a certified administrative legal specialist (*Gyousei shoshi*) regarding, for example, visas, international marriage, nationalization and etc.

【Date】 January 7 Thursday, 1:30pm - 4pm

### Learning Support Class Sasayuri Kyousitsu

ささゆり 教室

Students can find support to reinforce material learned in school in Japanese, for 3<sup>rd</sup> to 9<sup>th</sup> graders.

No classes on Jan.2

【Date】

Sat. 2pm - 4pm

【Venue】

Sogo Fukushi Kaikan 2F

【Fee】 200yen / class

【Tel】 070-4455-4900

### Japanese Language Class Iga Nihongo no Kai

伊賀 日本語の会

Who wants to speak Japanese? Come and join us! Also you can prepare for Nihongo Kentei test here.

Classes until Dec.26

【Date】

Wed. 7:30pm - 8:40pm

Sat. 7pm - 8:30pm

【Venue】

Sogo Fukushi Kaikan 2F

【Fee】 200yen / class

【Tel】 0595-23-0912



The Ins and Outs of Iga-shi Tabunka Kyousei Center い が し た ぶ ん か き ょ う せ い セ ン タ ー 紹 介

Iga-shi Tabunka Kyousei Center is the home base for the multicultural coexistence to support life and activities of residents from other countries and deepen understanding of different cultures.

From this December, we will start consultation in Vietnamese.

Iga-shi International Friendship Association Office is also in the same facility so visit us if you have a curious in the international communication.

- 【Services】 - Consultation for the residents from other countries (Video interpreter supports 13 languages.)  
 - Information in Portuguese, Chinese, Spanish, Vietnamese and English.  
 - Consultation about multicultural coexistence  
 - Exchange event between Japanese and people from other countries  
 - Various courses

【Business Hours】 Weekdays, the second and the fourth Sundays: 9am to 5pm

【Tel】 0595-22-9629

【Address】 Ueno Higashi-machi 2955, Iga City



※See page 3 for more info and QR code.

To prevent COVID-19, from December, you must make an appointment before you visit the center. Thank you for your cooperation in advance.



Hot Topics あたら しい おし ら せ



Garbage Colletion and Bringing in over the New Year Holidays

ねんまつねんし しゅうじゅうもちこみ  
 年末年始のごみ収集と持込

The collection dates for garbage over the holiday period are the same dates as those written in your garbage collection calendar. However, if you need to dispose of garbage during the days that garbage is not being collected, please refer to the details below. Please be noted that the garbage disposal facilities are very busy at this time of year, so please come early and make sure that you dispose of your garbage according to the garbage types.

	Iga North Region <Ueno, Iga, Shimagahara, Ayama, Oyamada>	Iga South Region <Aoyama>
Garbage types	Combustible, Plastic Packaging, Metals, Paper, Blankets/Futons, Glass bottles, Glass, Ceramics etc.	Concrete, soil, roof tiles, blocks, bricks, tiles etc.
Take to	Sakura Recycling Centre (Hatta 3547-13) TEL 0595-20-9272	Combustible, Unburnable, Oversized, Recyclables, Plastic Packaging
Time	Incombustibles processing plant (Nishi Takakura 4631) TEL 0595-23-8991	Iga Nanbu Clean Centre (Okugano 1990) TEL 0595-53-1120
Fee	09:00am-16:30pm	09:00am-16:0pm
Holidays	500 yen per 50kg	500 yen per 100kg
	Dec 31 Thu - Jan 3 Sun	120 yen per 10kg *Recyclables free
		Dec 30 Wed - Jan 30 Sun

The Coming of Age Ceremony, celebration being 20 years old せいじんしき 成人式のお知らせ

The Coming of Age Ceremony is one of the important ceremonies in Japan to celebrate being 20 years old on The Coming of Age Day. People who are 20 years old, please attend the ceremony to celebrate your Coming of Age and confirm the responsibility and obligation as an adult.

On December, those who are eligible will receive the post card to invite you to attend the ceremony. Please write your contact (cell phone number) and bring it on the day. If you live out of Iga now, you will not get the invitation but you can attend the ceremony with your IDs such as the health insurance certificate or the driver's license.

- ※It may be held online depending on the COVID-19 situation. Please check the updated information on the website.
- ※You can't enter the venue without the temperature measurement and a mask.

【Date】 January 10, Sunday, 1pm- (open at 12:30pm)

【Venue】 Venues in each district shown on the invitation post card, or make an inquiry if you don't find your venue.

【Eligibility】 Those who were born between April 2, 2000 and April 1, 2001.

【Inquiries】 Shogai Gakushu Ka Sec. Tel 0595-22-9679

“Iga Nihongo-no-Kai” got “Iga City Virtue Award”

い が に ほ ん ご の かい ひょうしょう  
 伊賀日本語の会が表彰されました

This award is given to those who contributed to Iga City. Since its inauguration in 1993, for 27 years, they have taught Japanese language to over 3,500 foreign roots students as a major role in Iga where high proportion of foreign residents lives in. They will continue to develop their activities and look forward to your participation to be enrolled in the study procession.

【Inquiries】 Iga Nihongo-no-Kai Tel:0595-23-0912



Year End Road Safety Campaign in Mie

ねんまつこうつうあんぜん けんみんうんどう  
 年末交通安全 県民運動

【Period】 December 1 Tue - 10 Thu

【Intensive Points】

- Prevention of traffic accidents for children and the elderly
- Priority to pedestrians at the crossing
- Protection yourself with seat belt and child's seat
- The eradication of drunk driving

【Inquiries】 Shimin Seikatsu-ka Tel:0595-22-9638